

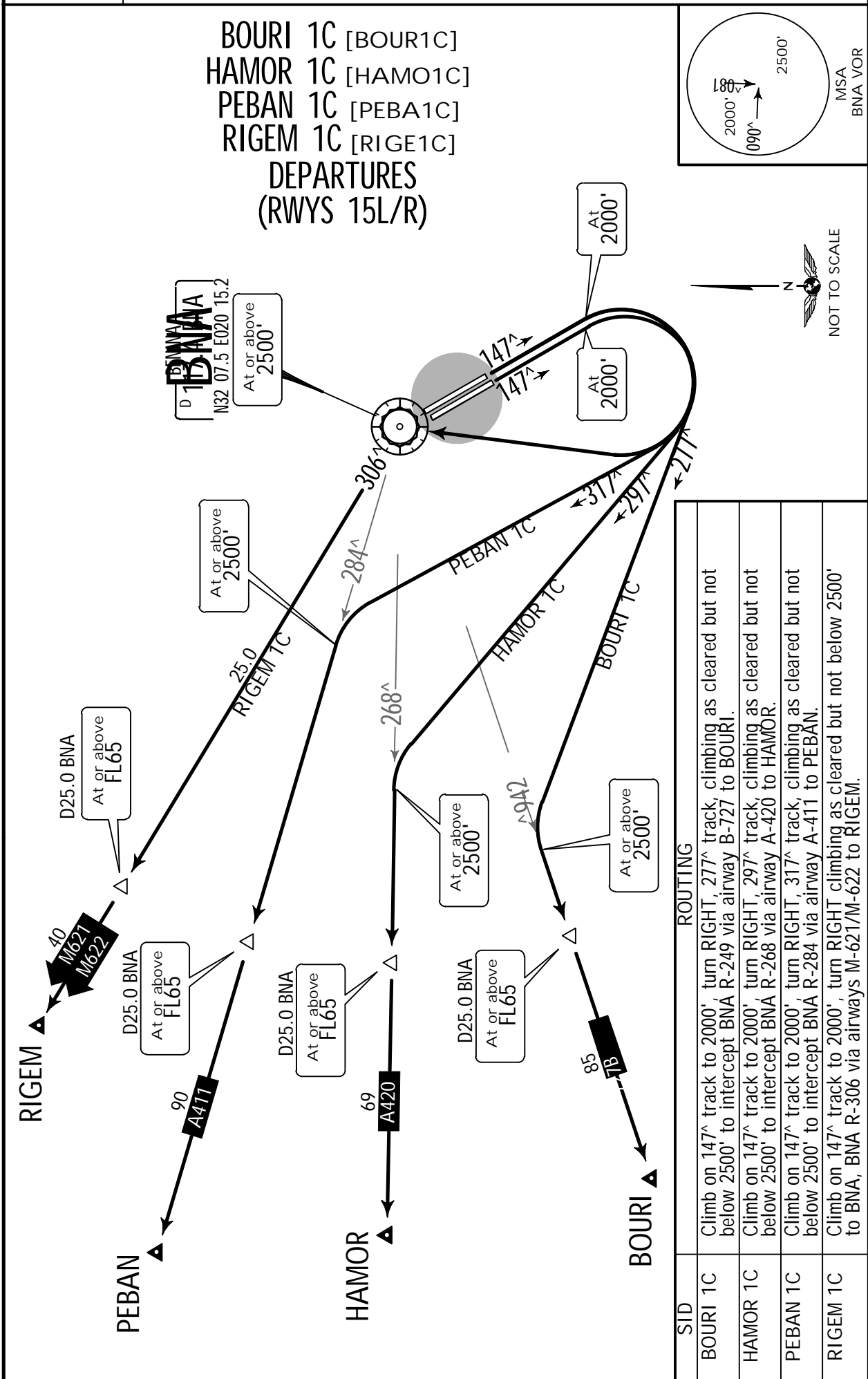
HLLB/BEN  
BENINA INTL

**JEPPESEN**  
29 SEP 23 (10-3B).Eff.5.Oct.

**BENGHAZI, LIBYA**  
**.SID.**

Apt Elev  
436'

Trans level: FL70    Trans alt: 5000'



SID	ROUTING
BOURI 1C	Climb on 147 <sup>^</sup> track to 2000', turn RIGHT, 277 <sup>^</sup> track, climbing as cleared but not below 2500' to intercept BNA R-249 via airway B-727 to BOURI.
HAMOR 1C	Climb on 147 <sup>^</sup> track to 2000', turn RIGHT, 297 <sup>^</sup> track, climbing as cleared but not below 2500' to intercept BNA R-268 via airway A-420 to HAMOR.
PEBAN 1C	Climb on 147 <sup>^</sup> track to 2000', turn RIGHT, 317 <sup>^</sup> track, climbing as cleared but not below 2500' to intercept BNA R-284 via airway A-411 to PEBAN.
RIGEM 1C	Climb on 147 <sup>^</sup> track to 2000', turn RIGHT climbing as cleared but not below 2500' to BNA, BNA R-306 via airways M-621/M-622 to RIGEM.

**BENGHAZI, LIBYA**  
**.SID.**

Apt Elev  
436'

Trans level: FL70    Trans alt: 5000'

BOURI 1F [BOUR1F]  
HAMOR 1F [HAMO1F]  
PEBAN 1F [PEBA1F]  
RIGEM 1F [RIGE1F]  
**DEPARTURES**  
(RWYS 33L/R)

NOT TO SCALE

SID	ROUTING
BOURI 1F	Climb to BNA, turn LEFT, 227° track, climbing as cleared but not below 2500' to intercept BNA R-249 via airway B-727 to BOURI.
HAMOR 1F	Climb to BNA, turn LEFT, 247° track, climbing as cleared but not below 2500' to intercept BNA R-268 via airway A-420 to HAMOR.
PEBAN 1F	Climb to BNA, turn LEFT, 267° track, climbing as cleared but not below 2500' to intercept BNA R-284 via airway A-411 to PEBAN.
RIGEM 1F	Climb to BNA, turn LEFT, climbing as cleared but not below 2500' to intercept BNA R-306 via airways M-621/M-622 to RIGEM.